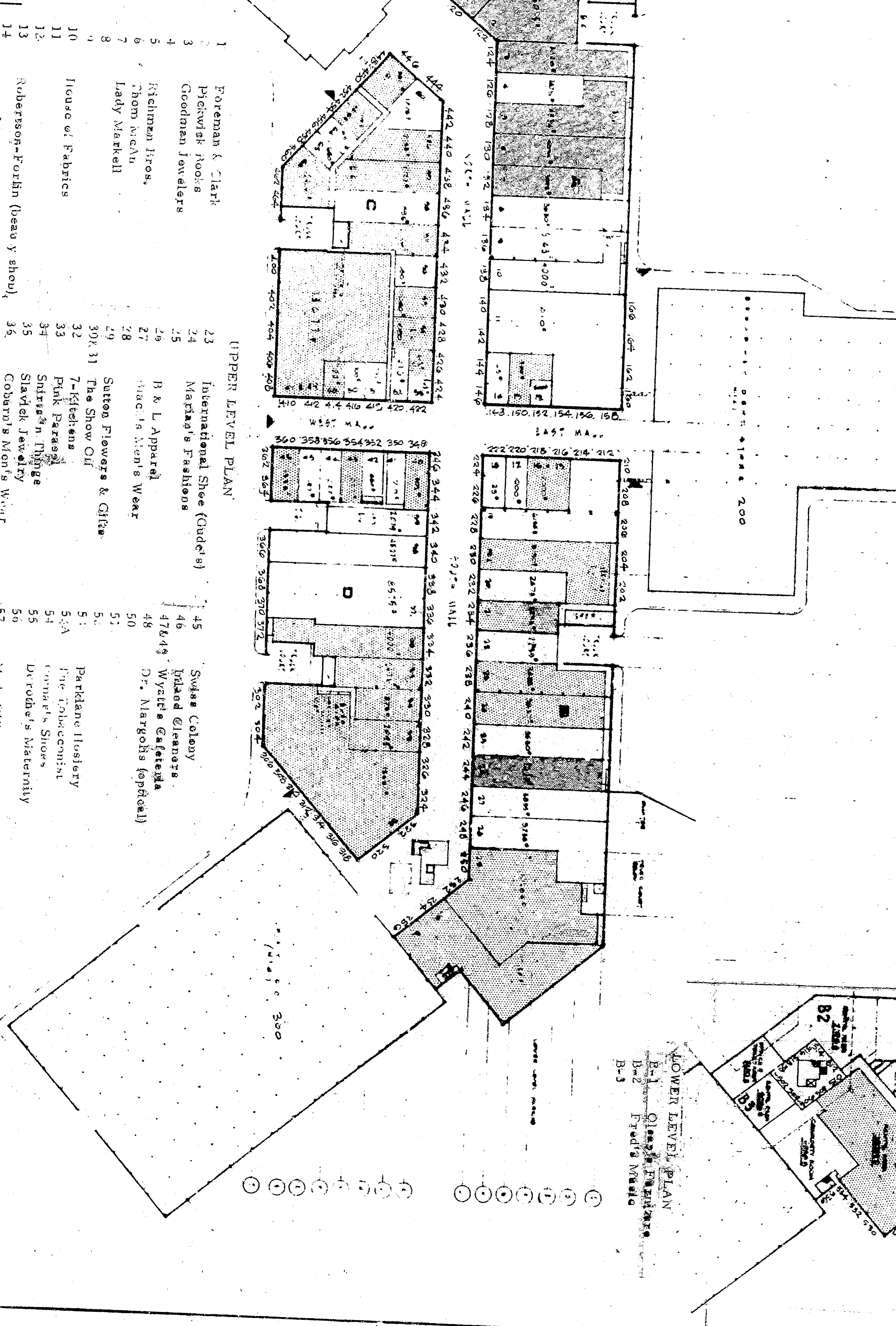


NUMBERING SYSTEM FOR INLAND CENTER,
701 SOUTH COLTON AVENUE
SAN BERNARDINO, CALIFORNIA

CITY OF SAN BERNARDINO, DEPT. OF ENGINEERING
 APPROVED: *[Signature]* DATE: 8/26/66
 CITY OF SAN BERNARDINO FIRE DEPARTMENT
 APPROVED: *[Signature]* DATE: 8/26/66
 UNITED STATES FIRE SPRINKLER ASSOCIATION
 APPROVED: *[Signature]* DATE: 8/26/66

- | | | | | | |
|----|--------------------------------|----|-----------------------------|----|------------------------|
| 1 | Foreman & Clark | 23 | International Shoe (Gude's) | 45 | Swiss Colony |
| 2 | Pedvick's Photo | 24 | Korner's Fashion | 46 | Island Cleaners |
| 3 | Goodman Jewellers | 25 | B. K. E. Apparel | 47 | Wycze's & Falek's |
| 4 | Richardson's | 26 | Shoe World | 48 | Dr. Mergel's (optical) |
| 5 | Richardson's | 27 | Shoe World | 49 | |
| 6 | Richardson's | 28 | Shoe World | 50 | |
| 7 | Lady Marshall | 29 | Shoe World | 51 | |
| 8 | | 30 | Shoe World | 52 | |
| 9 | | 31 | Shoe World | 53 | |
| 10 | House of Fabrics | 32 | Shoe World | 54 | |
| 11 | | 33 | Shoe World | 55 | |
| 12 | | 34 | Shoe World | 56 | |
| 13 | Solomonson-Ford (Beauty Salon) | 35 | Shoe World | 57 | |
| 14 | | 36 | Shoe World | 58 | |
| 15 | Pacific Savings | 37 | Shoe World | 59 | |
| 16 | | 38 | Shoe World | 60 | |
| 17 | | 39 | Shoe World | 61 | |
| 18 | | 40 | Shoe World | 62 | |
| 19 | Jewelers | 41 | Shoe World | 63 | |
| 20 | | 42 | Shoe World | 64 | |
| 21 | Frederick's of Highland | 43 | Shoe World | 65 | |
| 22 | | 44 | Shoe World | 66 | |



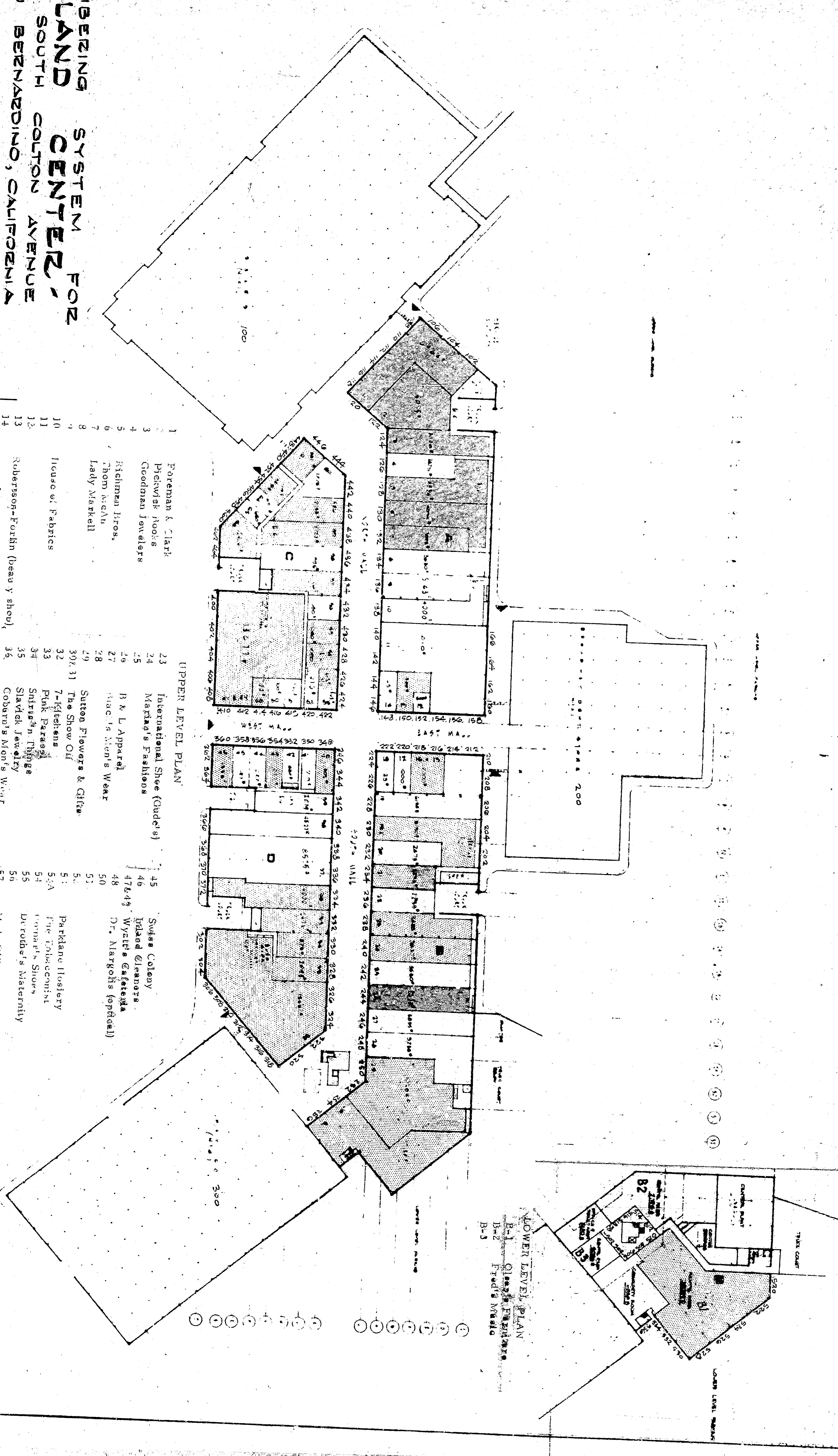
UPPER LEVEL PLAN
 LOWER LEVEL PLAN
 NORTH
 SCALE: 1/8" = 1'-0"

**NUMBERING SYSTEM FOR
INLAND CENTER,
701 SOUTH COLTON AVENUE,
SAN BERNARDINO, CALIFORNIA**

CITY OF SAN BERNARDINO, DEPT. OF ENGINEERING
APPROVED: [Signature] DATE: 8/26/66
CITY OF SAN BERNARDINO FIRE DEPARTMENT
APPROVED: [Signature] DATE: 8/26/66
UNITED STATES FIRE SPRINKLER ASSOCIATION
APPROVED: [Signature] DATE: 8/26/66

1 Foreman & Clark
2 Pickwick Photo
3 Goodman Jewellers
4 Richardson Jewelers
5 Richardson Jewelers
6 Richardson Jewelers
7 Lady Marshall
8
9
10 House of Fabrics
11
12
13
14
15
16
17
18
19
20
21
22
23
24
25
26
27
28
29
30
31
32
33
34
35
36
37
38
39
40
41
42
43
44

45
46
47
48
49
50
51
52
53
54
55
56
57
58
59
60
61
62
63
64
65
66
67
68
69
70
71
72
73
74
75
76
77
78
79
80
81
82
83
84
85
86
87
88
89
90
91
92
93
94
95
96
97
98
99
100



UPPER LEVEL PLAN

LOWER LEVEL PLAN